

Implementing a Transition Plan



How to make a Transition Plan

I. Make a Self Evaluation

- A. Make an assessment of Trails, Facilities, and Access Routes
- B. Quantify Barriers Discovered

II. Prioritize Improvements

- A. Sites easiest to make Accessible (low hanging fruit)
- B. Most used/ visited features
- C. Most significant features in site
- D. Provide equitable options geographically

III. Establish a Method to Remove Barriers

- A. Solution for each barrier
- B. Follow best practices (Forest Service website, ABA guidelines)

IV. Create a Timeline

- A. Examples of Timelines
- B. Funding Ideas

V. Summary

Self Evaluation: Assess Trails

Universal Trail
Assessment Process
(UTAP)



High Efficiency Trail
Assessment Process
(HETAP)

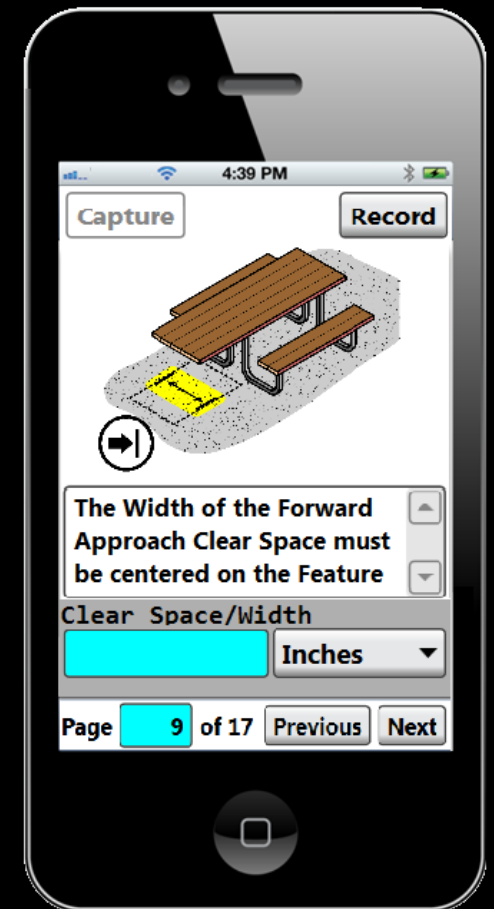


Self Evaluation: Assess Facilities

Make assessments on all facilities and check them with the appropriate accessibility guidelines



Developed
Outdoor
Recreation
Assessment
Process



Self Evaluation: Access Routes & ORAR



-Surface types (paved
& natural surface
paths)



Self Evaluation: Quantify Barriers Discovered



Layers

N:_Xchange_Projects\xc_148 Phs2\148-2 Indian Creek Testi
 Summit Lake to Campground

- Grade
- > 20%
- 12.5 - 20%
- 8.3 - 12.5%
- 5 - 8.3%
- 0 - 5%
- 5 - 8.3%
- 8.3 - 12.5%
- 12.5 - 20%

Station Data

- N:_Xchange_Projects\xc_148 Phs2\148-2 Indian Creek Testi
- N:_Xchange_Projects\xc_148 Phs2\148-2 Indian Creek Testi
- World_Imagery
- World_Topo_Map

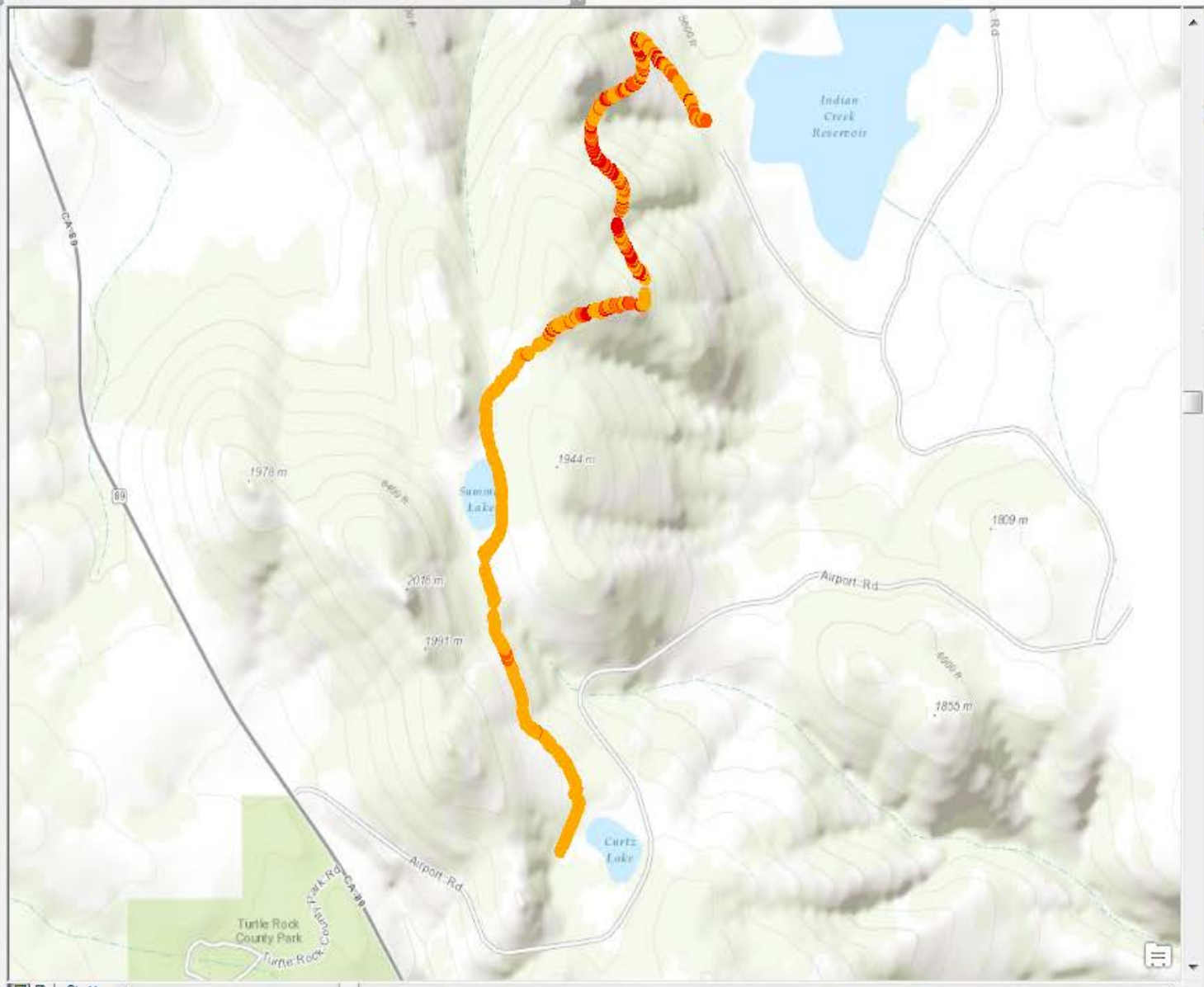


Table Of Contents

Layers

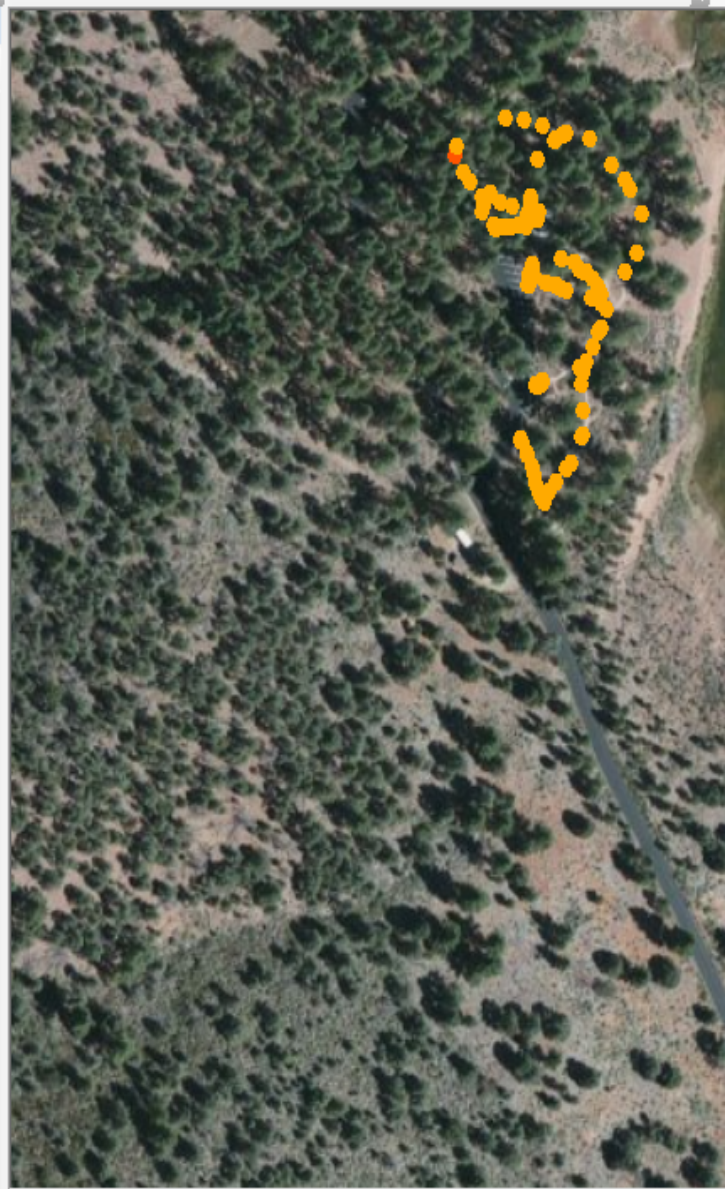
- N:_Xchange_Projects\xc_148 Phs2\148-2 Indian Creek Testi
 - Tent Camping Area
 - Grade
 - > 20%
 - 12.5 - 20%
 - 8.3 - 12.5%
 - 5 - 8.3%
 - 0 - 5%
 - 5 - 8.3%
 - 8.3 - 12.5%
 - 12.5 - 20%
 - 'Station Data\$'
 - Group Camping Area
 - Grade
 - > 20%
 - 12.5 - 20%
 - 8.3 - 12.5%
 - 5 - 8.3%
 - 0 - 5%
 - 5 - 8.3%
 - 8.3 - 12.5%
 - 12.5 - 20%
 - 'Station Data\$'
 - N:_Xchange_Projects\xc_148 Phs2\148-2 Indian Creek Testi
 - N:_Xchange_Projects\xc_148 Phs2\148-2 Indian Creek Testi
 - N:_Xchange_Projects\xc_148 Phs2\148-2 Indian Creek Testi
 - World_Imagery
 - World_Topo_Map



Table Of Contents

Layers

- N:_Xchange_Projects\xc_148 Phs2\148-2 Indian Creek Testi
 - Tent Camping Area
 - Grade
 - > 20%
 - 12.5 - 20%
 - 8.3 - 12.5%
 - 5 - 8.3%
 - 0 - 5%
 - 5 - 8.3%
 - 8.3 - 12.5%
 - 12.5 - 20%
 - 'Station Data\$'
 - N:_Xchange_Projects\xc_148 Phs2\148-2 Indian Creek Testi
 - Group Camping Area
 - Grade
 - > 20%
 - 12.5 - 20%
 - 8.3 - 12.5%
 - 5 - 8.3%
 - 0 - 5%
 - 5 - 8.3%
 - 8.3 - 12.5%
 - 12.5 - 20%
 - 'Station Data\$'
 - N:_Xchange_Projects\xc_148 Phs2\148-2 Indian Creek Testi
 - N:_Xchange_Projects\xc_148 Phs2\148-2 Indian Creek Testi
 - N:_Xchange_Projects\xc_148 Phs2\148-2 Indian Creek Testi
 - World_Imagery
 - World_Topo_Map



Identify

Identify from: <Top-most layer>

- Tent Camping Area
 - Firm
 - Firm

Location: 119°47'2.725"W 38°44'43.674"N

Field	Value
Seg_No	1
Seg_Dist	28.2
Sta_Length	14.3
Cum_Length	42.4
Cum_Percent	2.8
TreadWidth	60
X_Slope	3.8
Grade	1.9
Surf_Cat	Firm
Surf_Type	Soil
Clear_Width	<null>
Latitude	38.74548
Longitude	-119.784084
Elevation	5469
Shape	Point



Identified 2 features

Prioritizing: Sites Easiest to Make Accessible

Sites with some accessible facilities

Trails with mild slopes

Barriers that can be removed with little capital investment

Features that can be improved with little staff time



Prioritizing: Sites Most Used/ Visited

Facilities that receive high volumes of visitors



Popular trails or scenic views

Access Routs that connect multiple features



Trailheads

Prioritizing: Significant Features

Questions to ask:

What is the reason the facility exists?

What is the experience provided?

What programmatic access needs to be provided?

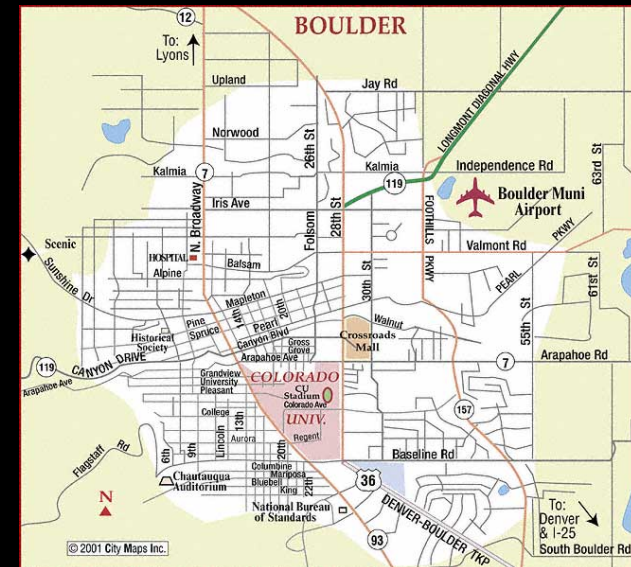
What access routes are provided?

Prioritizing: Equitable Options Geographically

Ensure that there are accessible sites spread throughout an area

Plan to make at least one of each type of facility accessible in an area

Select sites that have the potential to serve the highest number of users



Establishing a Method: Solutions for Each Barrier

Create standard solutions for similar issues

Provide alternative experiences







Think outside the box

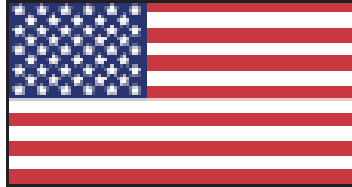









Establishing a Method: Solutions for Each Barrier

Display objective information
and let the user decide what
is accessible



	Tread Width
Typical	19 in (48 cm)
Minimum	12 in (31 cm)
	Surface
Soil 3% of the trail is Soft	
Typical Firmness (In)	0.21
Minimum Firmness (In)	0.32
	
Typical Stability (In)	0.54
Minimum Stability (In)	1.03
	
	Obstructions
Multiple 6 in (15.2 cm) Rocks	
<small>WARNING: Trail conditions may have changed since January 2009 when this trail was assessed. Temporary obstacles were not trapped.</small>	
<small> signage created by Beneficial Designs Inc. using data collected by a certified trail assessment coordinator.</small>	
	Trail Access Information

	
Ruins Loop	
Fort Churchill State Historic Park	
Length 0.6 mi (1.0 km)	
	Hikers
	Bikes
	Dogs OK
	Equestrians
	No Motorized Vehicles
	Grade
Typical Grade 2.6%	
8% of the trail is 5% to 12%	
23 ft (7 m) is 12% to 17%	
8% grade is a standard ramp	
	Cross Slope
Typical Cross Slope 5.9%	
13% of the trail is 10% to 15%	
455 ft (139 m) is 15% to 28%	
8% grade is a standard ramp	

Establishing a Method: Follow Best Practices



ABA Guidelines for Trails and ORARs

Appropriate accessibility guidelines per state

Consider following US Forest Service model & replace with, or install only accessible features



Timeline: Examples

Five year target: Facilities

Add accessible features
to 40% of all campsites
and make 20% of all
campsites fully accessible



Timeline: Examples

Five year target: Trails

Upgrade trail to most outstanding feature of the park to be fully accessible per appropriate accessibility guidelines



Timeline: Examples

Five year target: Access Routs

Ensure all ARs and ORARs
have surfaces that are firm
and stable



Timeline: Examples

Five year targets:

Pre-existing Issues

Correct all access deficiencies in built facilities per applicable guidelines



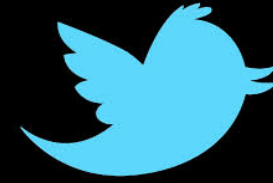
Timeline: Funding Ideas

Social Media Campaign

Delegate to outside advocates
(boy scouts, trail groups, etc)

Outside funding and grants

Complete through current
funding/budgets



Summary:

Land Manager Benefits

Increased user safety
and satisfaction

Provide more recreation
opportunities

Monitoring of
environmental impact

Asset Management



Summary:

Land Manager Benefits

Identification of work priorities

Enhanced planning & budgeting of projects

Provides information for GIS



Summary:

Land Manager Benefits

F244.2.1 Alterations and Additions

EXCEPTION: Where an entity is implementing a transition plan for program accessibility that designates specific camping units to provide mobility features. The entity shall not be required to comply when altering individual elements within camping units that are not designated to provide mobility features.

Summary:

User Benefits

Consistent information

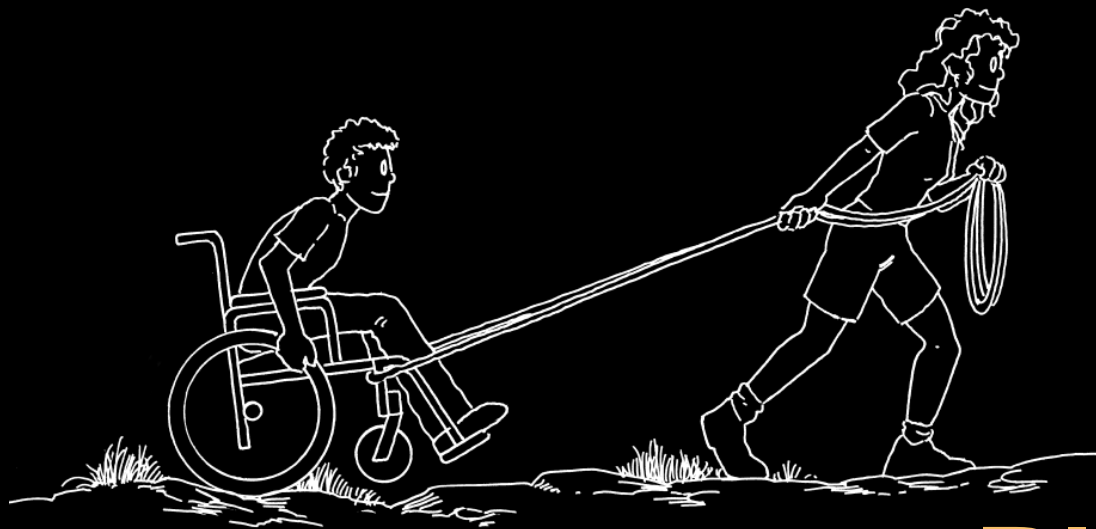
Increased independence,
safety, opportunities and
enjoyment

Responsible and
informed facility selection

Knowledge of actual
conditions



Information available...



...Plan accordingly

**People
with
Disabilities**



**Users with
limited
experience**

Everyone benefits!



Children

**Adults who
are older
or less fit**



Acknowledgement (DORAP)

Phase I & II funding for the Developed Outdoor Recreation Assessment Process was provided by the U.S. Department of Agriculture through the Small Business Innovation and Research program Grant number 2013-33610-21051

Beneficial Designs, Inc.

Minden, Nevada

www.beneficialdesigns.com

trails@beneficialdesigns.com

775.783.8822 voice

775.783.8823 fax

*Working toward universal access
through research, design & education*